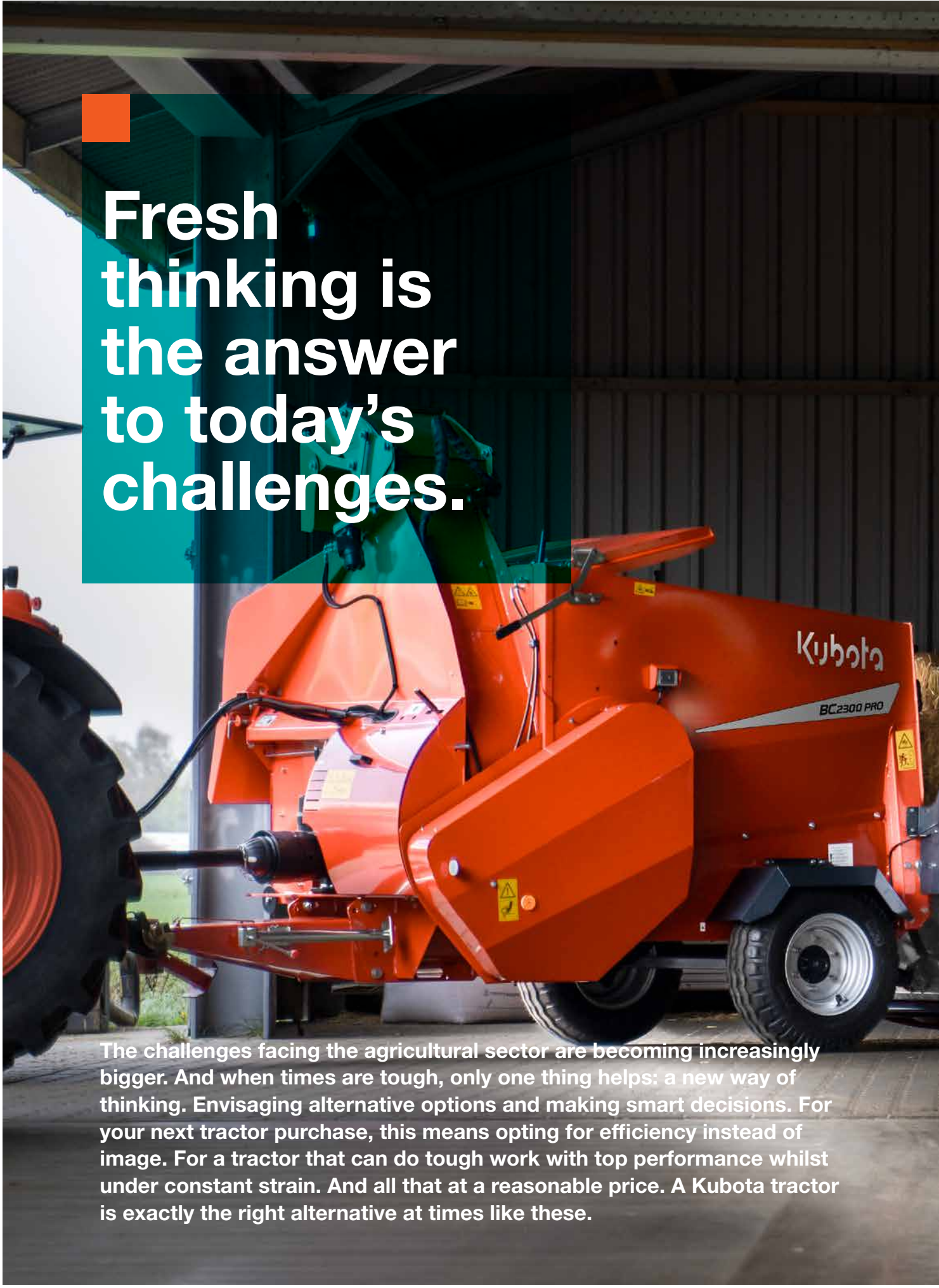


For Earth, For Life
Kubota

BC

**KUBOTA
BC SERIES**



A Kubota BC2300 PRO tractor is shown from a side-rear perspective, parked in front of a dark building. The tractor is orange with a green loader bucket. The text "Fresh thinking is the answer to today's challenges." is overlaid on a teal background in the upper left. The text "The challenges facing the agricultural sector are becoming increasingly bigger. And when times are tough, only one thing helps: a new way of thinking. Envisaging alternative options and making smart decisions. For your next tractor purchase, this means opting for efficiency instead of image. For a tractor that can do tough work with top performance whilst under constant strain. And all that at a reasonable price. A Kubota tractor is exactly the right alternative at times like these." is overlaid on the bottom left. The Kubota logo and "BC2300 PRO" are visible on the side of the tractor.

Fresh thinking is the answer to today's challenges.

The challenges facing the agricultural sector are becoming increasingly bigger. And when times are tough, only one thing helps: a new way of thinking. Envisaging alternative options and making smart decisions. For your next tractor purchase, this means opting for efficiency instead of image. For a tractor that can do tough work with top performance whilst under constant strain. And all that at a reasonable price. A Kubota tractor is exactly the right alternative at times like these.





#Highlights

BC1200-2600: Feeding or bedding in all conditions

Kubota bale choppers are rugged, dependable and versatile machines designed to be operated on a daily basis, without compromise.



BC1200

Mounted bale chopper – specially designed for working with straw for bedding purposes.

Capacity: 2m³

1 round bale up to 1.80m diameter

1 square bale up to max.

1.20x1.20x2.50m

BC2300

Trailed bale chopper with increased flywheel housing and blowing paddles for faster shredding.

Capacity: 3m³

1 round bale up to 2m or 2 round bales up to 1.50m

1 square bale up to max.

1.20x1.20x2.70m

BC2300 PRO

Pro model with higher shredding capacity. Bedding or feeding of hay, straw, silage or haylage.

Capacity: 3m³

1 round bale up to 2m or 2 round bales up to 1.50m

1 square bale up to max.

1.20x1.20x2.70m



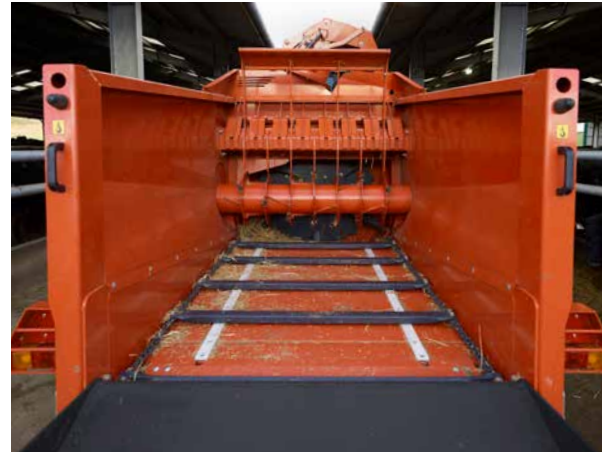
BC2600 PRO

The model with the highest volume. Featuring two beater drums for higher shredding capacity. Used for bedding or feeding of hay, straw, silage or haylage. Capacity: 6m³
3 round bales up to 1.8m
3 square bales up to max. 1.20x1.20x2.70m



The funnel design bale chamber

The Kubota BC series is primed for productivity. The special funnel design bale chamber provides efficient flow of material from chamber to drum. The inside of the bale chamber is smooth and clean for unrestricted material flow. Material is guided towards the beater drum more evenly and it is easier to empty the chamber when finishing bales.



The conveyor slats are designed for quick and easy individual replacement.



V-belt drive - low maintenance and quiet drive of the drum.



UltraGlide strips reduce wear to a minimum. (Optional for BC1200)



Floor conveyor

The floor conveyor consists of a hydraulically driven chain and slat floor conveyor with variable speed and reversing facility.

The ratio between floor conveyor and shredding drums is carefully designed to ensure smooth material flow. The floor conveyor runs on two wear strips made of special 'UltraGlide' plastic material to reduce friction and increase chain life.

Slat spacing has been specially determined to ensure consistent and even feed to the shredding drums. The strong conveyor slats are designed for quick and easy individual replacement. A rotating marker allows the operator to see the speed and direction of the floor conveyor from the tractor seat. The conveyor has an enclosed lower tray to ensure no spillage or crop loss.



Easy shifting from bedding to feeding on the 2-speed gearbox.



Wide tailgate design offers easier loading of bales.

Remote control of tailgate and floor chain

On top of the control terminal located inside the tractor cab, the trailed bale choppers are equipped with an additional remote controlled switch for the floor chain and tailgate (option BC1200 and BC1600 PRO). The ability to operate these functions directly from the side of the machine saves valuable time during loading.



Operating both tailgate and floor chain in safe distance from the moving parts, by using the remote control placed on the side of chamber.

Adapt to the job with 2-speed gearbox

To provide the correct flywheel speed for bedding and feeding the bale choppers are fitted with 2-speed gearbox. The gearbox speed is adjusted by the handle on the side of the machine.

- At lower speed the flywheel ensures a metered flow of silage or hay for feeding.
- At high speed a powerful blow for the most efficient distribution during bedding is ensured.

Tailgate design for easier loading of bales

The hydraulically controlled tailgate offers a self-loading capability for easy loading of round or square bales without the need of a second tractor. The wide design of the tailgate makes it easier to load bales. A deep, curved design of the tailgate ensures that the bale is kept firmly inside the tailgate, while the net or twine is removed.

The tailgate offers the ability to carry a second round bale for increased capacity. Total lift capacity of the rear door is 1200kg. A foldable bale retaining kit can be fitted to the end of the tailgate to ensure that the bales stay in position during operation.



Foldable bale retaining kit.



Easy self-loading of baled material.

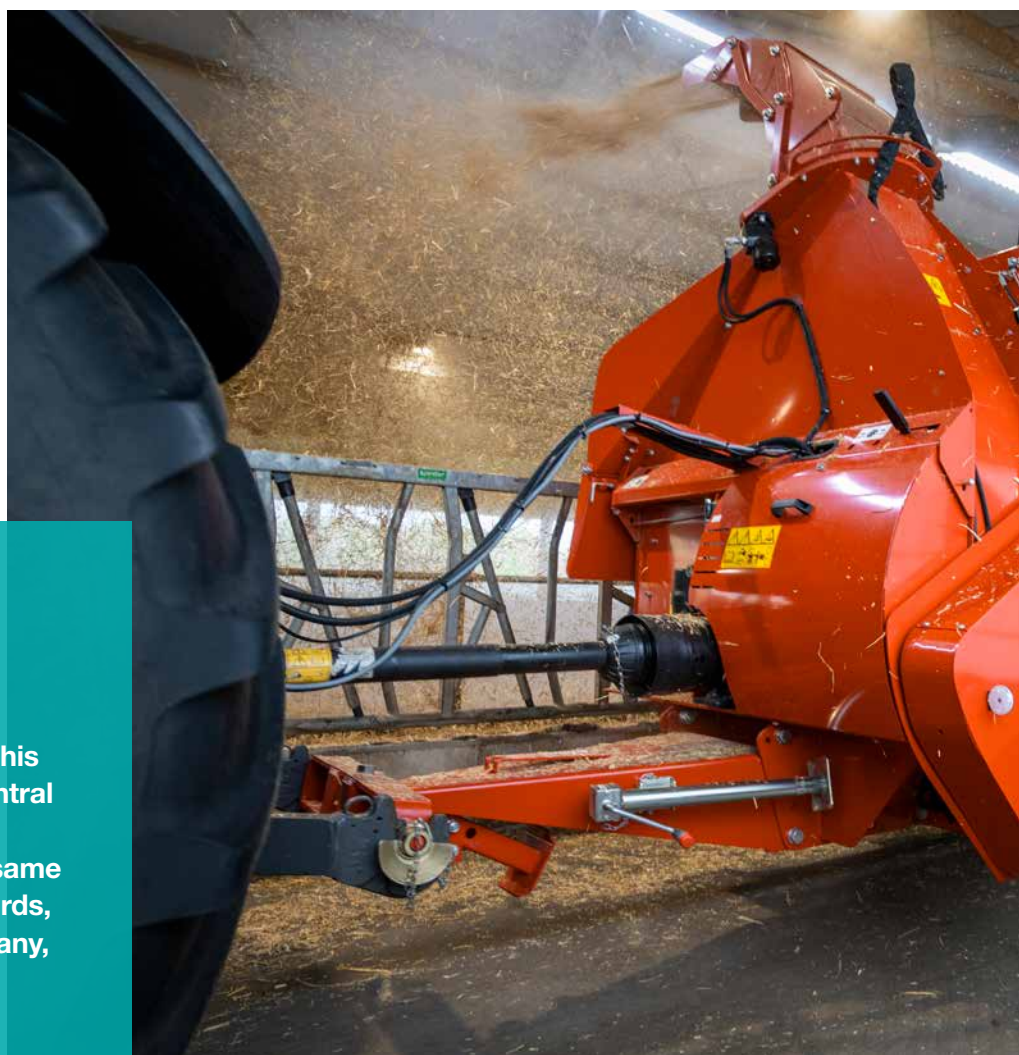


Bedding or feeding: full proof performance

At lower speed the Kubota flywheel ensures a metered flow of silage or hay for feeding. At high speed a powerful blow for the most efficient distribution during bedding is ensured. The gearbox speed is adjusted via the handle on the side of the machine.

Did you know?

Did you know that Kubota manufactures products in seven European countries? This proximity to the market is central to the company's philosophy. Each factory adheres to the same high Japanese quality standards, whether it is located in Germany, France, or Japan.





The swivel chute offers a 260° rotation of the chute.



The 4-stage swivel chute

The 4-stage swivel chute offers maximised comfort and is a cost saving solution with less waste and more efficient bedding and feeding process.

The swivel chute operates in 4 stages which optimises the blowing distance when bedding. Depending on the material and conditions of the barn it can blow up to 20m, which allows bedding of the most distant corners of the barn.

Designed with a turning radius of 260°, the system enables easy access to even difficult reachable spaces for complete bedding. The 4-stage movement also optimises feeding performance in flat or high troughs, without blockage, even with long fibrous material from round bale silage or hay.



In-cab control

Kubota BC series of bale choppers offers a greater range of adjustments from the cab with an intuitive and user friendly controlbox. A joystick easily controls the 4-stage swivel chute.

On top of the control terminal located inside the tractor cab, the Kubota bale choppers are equipped with an additional remote controlled switch for the floor chain and tailgate (optional for BC1200 and BC1600 PRO).



The 4-stage swivel chute is operated by the intuitive controlbox joystick.



#BC2300-2300 PRO-2600 PRO

Take shredding efficiency to new levels

The next generation Kubota flywheel housing provides more capacity by shredding the material faster. Both flywheel housing and blowing paddles have increased in dimensions to boost performance. This means more material is fed into the flywheel faster, finishing the bale at an incredible pace.



New wider flywheel housing with capacity for more material to flow through, faster.

1. Wider flywheel housing for more capacity

The extended dimensions of the flywheel housing and blowing paddles increase performance of the bale chopper. This enables the new BC2000 to handle more material at higher speed and efficiently transport the material into the chute.

2. Beater drum design for more productivity

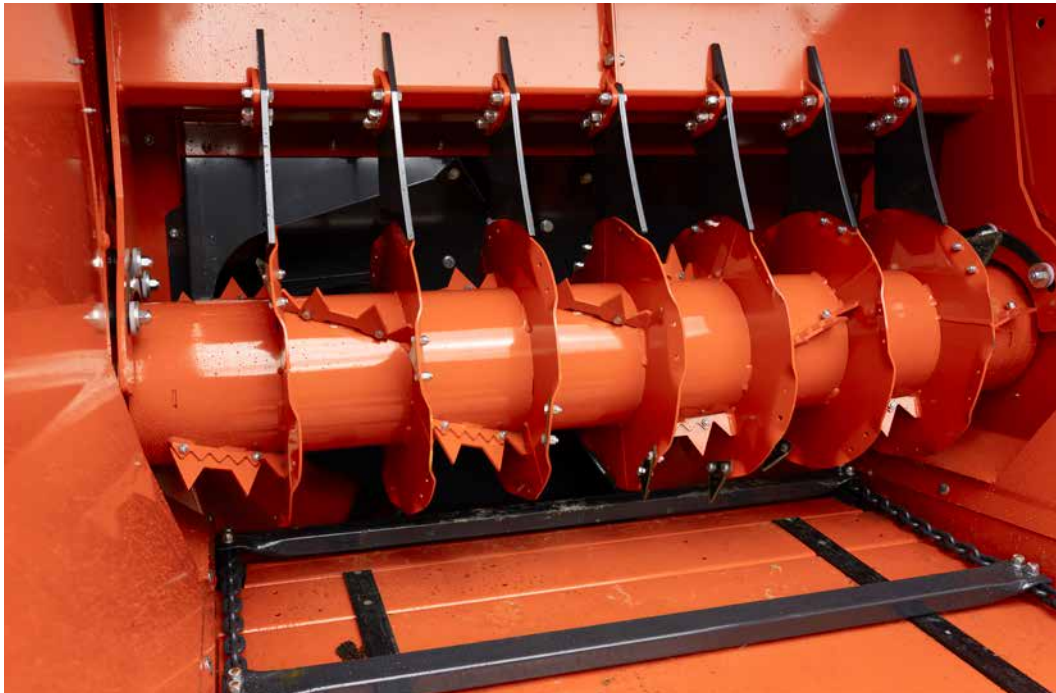
BC2000 models use a smaller diameter beater, creating a more open design to handle larger volumes of material. Redesigned grippers provide more aggressive guidance of material into the flywheel.

3. Improved flywheel design

1.55m diameter flywheel with 6 specially angled blowing paddles, designed for transporting large amounts of material. Bolt-on paddles ensure easy replacement in case of damage.

4. Wider swivel chute design

Size and area of exit from flywheel housing to swivel chute has increased to match the extended dimensions of the flywheel housing. This supports higher capacity and reduces risk of blockage.



Small diameter shredder rotor capable of handling large volumes of straw.

More productivity

Kubota BC2000 series is our next generation bale choppers that offer a completely redesigned flywheel solution with focus on increased material flow.



Bolt on paddles for easy and time efficient repair in case of damage.



#BC2600 PRO



Boost efficiency – quicker bedding and feeding routines

Step up in dimensions and speed with BC2600 PRO. This is the choice when you need more capacity to get the job done, fast. BC2600 PRO is designed in every aspect for faster bedding and feeding cycles.

Get the job done - faster

It comes with a high capacity bale chamber that will carry 6m³ material or up to three round bales. With its two-drum shredding solution combined with the high-capacity flywheel housing this is a bale chopper designed to process a lot of material in short time.

- Powerful bale chopper with two shredding drums for high-capacity shredding
- High volume bale chamber with 6m³ capacity designed for 3 round bales.
- Wider flywheel housing with capacity for more material to flow through, faster.
- Hydraulic activation of shredder rotor to allow flywheel to reach full speed before material is shred.

Hydraulic activation of shredder rotor

Valuable time is lost, if you block chute and flywheel and manually need to unblock it. With the Shredex belt clutch solution, the shredder rotor can be run independently from the flywheel and disengaged when starting up the flywheel. This allows the flywheel to go to full speed before the shredder rotor is activated and starts feeding material into the flywheel housing. All done hydraulically from the tractor cab.



Two-drum solution designed to handle large volumes of material.

Two shredding drums for more capacity

BC2600 PRO can handle high volumes of material in short time. It features a two-drum shredding solution that aggressively cuts and guides the material towards the flywheel. This bale chopper is able to cut and move the material quickly and get the job done in less time. BC2600 PRO uses two smaller diameter beater drums, creating a more open design to handle larger volumes of material. Redesigned cutting teeth provide more aggressive cut and better guidance of material into the flywheel. This means more material can be quickly shred and fed into the flywheel housing.



BC2600 PRO comes with a 6m³ capacity chamber. This allows for up to 3 round bales in one go.



Optional side extension plates available to increase bale chamber capacity by up to 1m³ and reduce spillage of material.



Flywheel can be run at full speed before the shredder drums are activated and material is being fed into the flywheel housing.



BC2600 PRO, offers an open-design bale chamber for easy access when loading from the top.



The extended drawbar, standard fitted with wide angle PTO, ensures easier operation, especially when turning with larger tyred tractors.



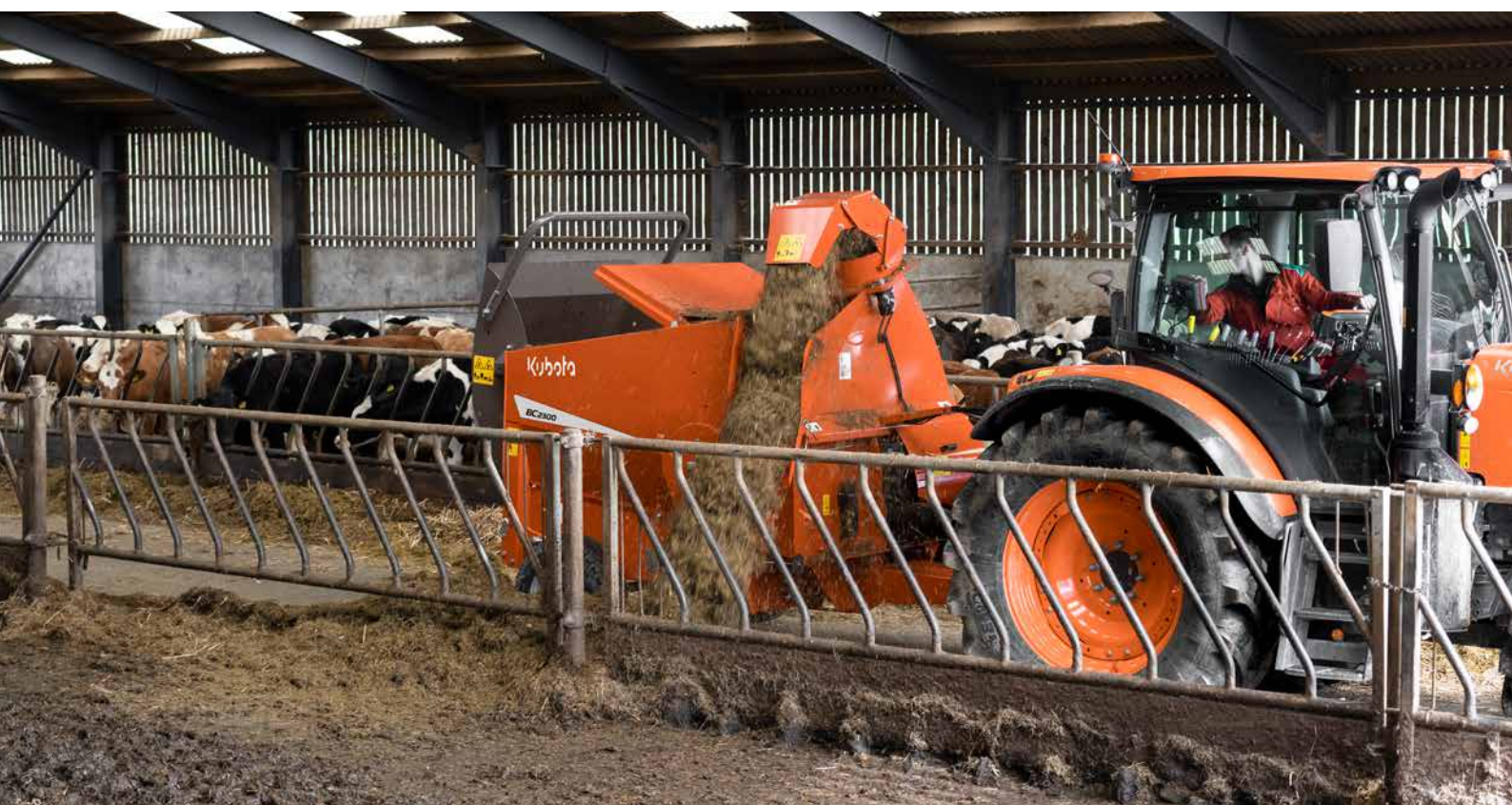
#BC2300 PRO

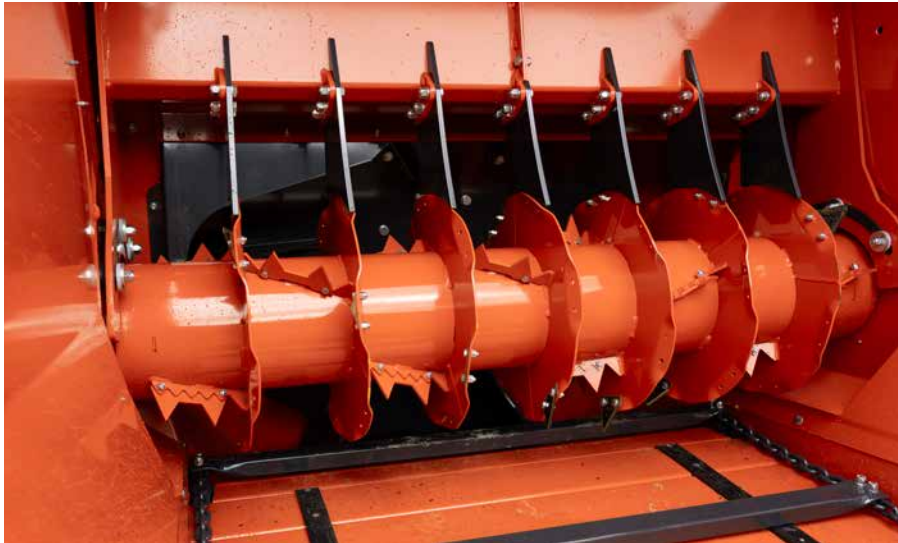
The all-round bale chopper

The BC2300 PRO excels in versatility and durable design. It is developed to distribute straw, hay and silage and is a flexible and efficient solution for bedding and feeding applications. It comes with a unique belt clutch solution for disengagement of the shredder rotor and a new hydraulic comb design.

Performance to do more

- Wider flywheel housing with capacity for more material to flow through, faster.
- Hydraulic activation of shredder rotor to allow flywheel to reach full speed before material is being shred.
- Hydraulic comb to control material flow into the flywheel.
- Top guard reduces spillage and guides material towards the shredder drum.





Flywheel can be activated and run at full speed before the shredder drum is activated and material is being fed into the flywheel housing.

Hydraulic activation of shredder rotor

With minimum downtime in mind, the BC2300 PRO has a new anti-blockage solution. Valuable time is lost, if you block chute and flywheel and manually need to unblock it.

With the Kubota belt clutch solution, the shredder rotor can be run independently from the flywheel and disengaged when starting up the flywheel. This allows the flywheel to go to full speed before the shredder rotor is activated and starts feeding material into the flywheel housing. This is all done hydraulically from the tractor cab.



Hydraulic comb

The BC2300 PRO is developed to work efficiently with straw, hay and silage material. The operator will enjoy the hydraulic comb that is controlled from the tractor cab. It is an efficient tool to control the flow of material into the flywheel to prevent blocking flywheel and chute. Especially when feeding losing material like clamp silage it proves to be a values feature.

Top guard

The new top guard reduces spillage and ensures material stays inside the bale chamber. It efficiently guides material towards the shredders. When loading new material into the bale chamber, the top guard can be opened to allow unrestricted access and easy loading.



#BC2300



Up capacity with the BC2300

The Kubota BC2300 boasts a range of features to improve operating performance. With the high capacity flywheel housing the BC2300 offers better crop flow and more shredding capacity.

- Wider flywheel housing with capacity for more material to flow through, faster.
- Slim design of shredder rotor allows more material to flow through.
- 4 stage swivel chute for more accurate bedding and feeding application.
- Extended drawbar design and wide angle PTO for better manoeuvrability.



The extended drawbar ensures easier operation, especially when turning with larger tyred tractors.



Adjustable slide for guiding material away from the wheel of the baler.



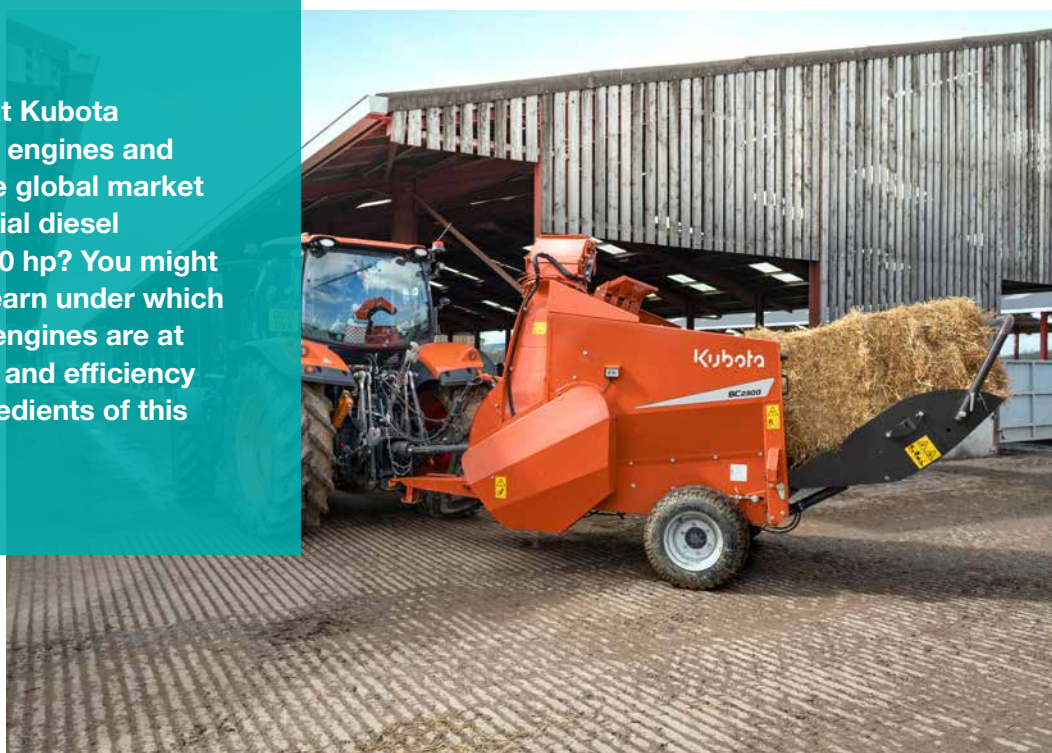
4-stage swivel chute for more accurate guidance of material. Especially when using the feeding application.



Operating both tailgate as well as floor chain in a safe distance from moving parts by using the remote control placed on the side of the BC2000 series.

Did you know?

Did you know that Kubota produces its own engines and that Kubota is the global market leader for industrial diesel engines under 100 hp? You might be surprised to learn under which bonnets Kubota engines are at work. Top quality and efficiency are the main ingredients of this success.





#BC1200

A robust and simple solution for bedding and feeding

Accurate and even bedding – a connection to a tractor for the Kubota BC1200 will allow quick pick-up of bales and provides enormous manoeuvrability even on difficult farm places and barn passages. The economic concept can be upgraded with various options to all farm demands.





The bedding specialist

The mounted bale chopper BC1200 is designed specially for working with straw for bedding purposes. The chamber of 2m³ offers fast and easy loading of bales and the tailgate offers the possibility to carry an extra bale for improved efficiency.

The special design of the tailgate and optional bale retainer offers the possibility to carry one extra round bale.

Self-loading of bales

The hydraulically operated tailgate fitted to the BC1200 provides a convenient self-loading facility for easy loading of square or round bales.



Convenient and simple self-loading of bales.



The drum-comb combination is designed for shredding straw bales in all formats.



For multipurpose of bedding and feeding, a silage kit with extended comb is available.

The drum and flywheel

The working heart of the BC1200 is the combination of drum, comb and flywheel – all specifically designed to shred straw bales of various formats. The drum is fitted with spirals of knives and small 'gripper' teeth, which take the straw from the bale and feed it evenly into the flywheel chamber.



Kubota Farm Solutions

360° performance for 100% success.

We understand that you need more than a powerful tractor to succeed: namely, an integrated system of products and services to increase your competitiveness and preparation for the future. With Kubota Farm Solutions, we have brought together our solutions in a system – and targeted our proposition to you. From intelligent technology to individual services, the Kubota Farm Solutions advantages complement each other, forming a circle that ends where it begins: with our commitment to support you a little better every time, now and in the future.

Technical data

Model		BC1200	BC2300	BC2300 PRO	BC2600 PRO	
Dimensions & weight						
Chute		Swivel chute	4-Stage Swivel	4-Stage Swivel	4-Stage Swivel	
Cubic Volume	(m³)	2.0	3.0	3.0	6.0	
Blowing Distance (straw**)	(m)	up to 18	up to 20	up to 20	up to 20	
Chassis		Mounted	Trailed	Trailed	Trailed	
Metering System		Single Drum	Single Drum	Single Drum	Two-Drum	
Gearbox Specification		2 Speed	2 Speed	2 Speed	2 Speed	
Capacity						
Load Capacity	(kgs)	800	1500	1500	3000	
Unladen Weight	(kgs)	1435	1950	2000	2460	
Max. Round Bale Width	(m)	1.35	1.35	1.35	1.80	
Max. Round Bale Diameter	(m)	1.80	2.10	2.10	2.10	
Max. Square Bale Size	(m)	1.2x1.2x2.5	1.2x1.2x2.7	1.2x1.2x2.7	1.2x1.2x2.7	
Dimensions						
Overall Length - Door Closed	(m)	2.87	4.00	4.00	5.14	
Overall Height	(m)	2.60	2.66	2.66	2.66	
Overall Height - Chute open	(m)	2.70	3.06	3.06	3.06	
Overall Width - Machine	(m)	2.14	2.00	2.00	2.00	
Overall Width - over Tyres	(m)	-	2.01	2.01	2.34	
Discharge						
Chute		Electric	Hydraulic	Hydraulic	Hydraulic	
Attachment to Tractor						
Power Requirement at PTO	(kW/HP)	40/55	51/70	51/70	56/75	
PTO Input Speed	(rpm)	540	540	540	540	
Wide angle PTO		-	●	●	●	
Safety Protection		PTO Friction Clutch & Over-run				
Tractor Flow Requirement		40 litres/min @ 180 bar	50 l/min @ 180 bar			
Equipment						
Bale Retaining Kit		○	○	○	○	
Remote Control		○	●	●	●	
Number of Knives on Drum		14 x Standard - 28 extra optional				
Wheel Equipment		-	10x15.3x14ply	10x15.3x14ply	11x15.3x14ply	
Road light kit		○	○	○	○	
Mudguard		-	○	○	○	
Drawbar, Ring Hitch or 2-pt Linkage		-	●	●	●	
Silage Kit		○	●	●	●	

** Depending on barn-specific conditions. - not available ○ option ● standard





The company reserves the right to change the above specifications without notice. This brochure is for descriptive purpose only. Some of the items pictured in this brochure are optional and not standard equipment. Please consult your local Kubota dealer for warranty, safety or product information. For your safety, Kubota strongly recommend the use of a seat belt in all applications.

® = trade mark protection in the EU.

©2025 Kverneland Group Kerteminde AS

